

ST JOHN THE EVANGELIST

MINISTRIES
DIRECTORY
2011

Mission Statement

Under the guidance of the Holy Spirit ,
the people of St John the Evangelist
are called to embrace the Church's mission
of proclaiming the Good News of Salvation through Jesus Christ for all.

Our witness to the presence of God
and our reaching out to others,
allows us to deepen our relationship with God.
We accomplish this through our worship together,
especially in the celebration of the Eucharist;
through ongoing faith development,
for all people of all ages and life situations;
through the performance of good works;
and through responsible stewardship,
by which we care for the gifts given to us by our God.

Disclaimer: Please be patient with any errors - statements may need to be reworked, or corrected.

Please email any changes or additions that need to be made to:

parishoffice@stjohnsea.org.

Staff

Pastor

Fr Crispin A. Okoth

206-782-2810 ext 314

frcrispin@stjohnsea.org

Pastoral Assistant for Administration

Dani D'Amelio

206-782-2810 ext 313

ddamelio@stjohnsea.org

Pastoral Assistant for Faith Formation

Anne Merklin

206-782-2810 ext 305

amerklin@stjohnsea.org

Pastoral Assistant for Music

David DiFiore

206-782-2810

music@stjohnsea.org

Parish Administrative Assistant

Evelyn Pinkerman

206-782-2810 ext 0

epinkerman@stjohnsea.org

Parish Facilities Supervisor

Steve Berlage

206-276-4041

parishoffice@stjohnsea.org

School Principal

Bernadette O'Leary

206-783-0337 ext 310

boleary@stjohnsea.org

School Vice Principal

Paul Kelley

206-783-0337 ext 335

pkelley@stjohnsea.org

Parish Leadership

The councils and commissions provide leadership for the parish community by serving as consultative bodies to the Priest Administrator and Parish Staff. The councils (Pastoral and Finance) collaborate with the Priest Administrator to address the challenges and opportunities of the overall parish. Commissions provide leadership in one particular area of the parish needs (i.e. - school, facilities, liturgy, faith formation). Both councils and commissions serve as advisory to the Priest Administrator by making recommendations for priorities, strategic planning, and communications. New members are discerned through the Parish Discernment Process.

Pastoral Council

The Pastoral Council is a consultative body to the Priest Administrator that recommends parish priorities and directions through pastoral planning and long-range visioning. The council also fosters understanding among the parishioners and parish organizations through communications and open dialog.

Chair - Jesse Franklin

Finance Council

The Finance Council facilitates the on-going mission and ministry of the parish through the stewardship of the parish's financial and personnel resources. Working with the Pastoral Assistant for Administration, the council recommends prioritizes, directions and policies; oversees the parish budget; and engages in long-range financial planning.

Chair – Ellen Petre EIBP@aol.com

Faith Formation Commission

The Faith Formation Commission serves as a consultative body to the Priest Administrator and the Pastoral Assistant for Faith Formation by assessing the parish's need for faith formation, ensuring that quality faith formation programs are implemented for all age groups.

Anne Merklin 206-782-2810 ext 305 amerklin@stjohnsea.org

Liturgy Commission

The Liturgy Commission recommends policies and practices to help foster the parish's sacramental, liturgical and spiritual life. Acting as advisors to the Priest Administrator, the members also collaborate with those in the liturgical ministries.

Chair – Rob Ungaro r.ungaro@comcast.net

School Commission

The School Commission advises and supports the Priest Administrator and Principal in the formation of policy and the ongoing development of the parish school. It works with the Principal and school staff to facilitate the implementation of the school's Five-Year Plan. The Commission facilitates communication and understanding among the parish organizations.

Chair: Gretchen Swanson gretchenswanson@hotmail.com

Social Justice Commission

The Social Justice Commission recommends parish policies and programs which address the social mission of the church. The Commission engages in careful study of church teaching and it monitors social needs present in the local area, and recommends ways in which the parish can address those needs.

Chair: Joyce Farrell

Stewardship Commission

The Stewardship Commission promotes the stewardship of the time, talent and treasure by providing education on the principles of good stewardship and developing methods of fostering stewardship among parishioners. It works to promote the annual parish campaign for stewardship and the annual Archdiocesan Catholic Appeal.

Chair: Todd Sawicki todd@sawickipedia.com

Facilities Committee

The Facility Commission serves as a consultative body to the Priest Administrator by assessing the entire physical plant needs. The function of the Facility Committee is to perform maintenance and repair projects. The intent is to maintain and improve the parish facility. The committee offers expertise and assistance.

Co-Chairs: Chris Kaufman chriskaufman@agovia.com

Mike Fletcher mfletcher26@gmail.com

Liturgical Ministries

Rosary Leaders

Individuals lead the Rosary -Every morning M-F at 8am and 1st Saturday of the month.

Parish office 206-782-2810 or parishoffice@stjohnsea.org

Altar Servers

Youth (4th grade & older) and **adults** assist during Mass.

Contact: Meredith Lambert 206-789-6135

Lectors

Adult and teenagers proclaim the Scripture readings and pray the General Intercessions during Mass.

Jim Russell - jrussellsea@comcast.net

Eucharistic Ministers

Assist with the distribution of Holy Communion during Mass.

Parish office 206-782-2810 or parishoffice@stjohnsea.org

Greeters

Individuals, couples or families arrive 20 minutes before Mass and extend a welcome and any needed information. during Mass.

Parish office 206-782-2810 or parishoffice@stjohnsea.org

Music Ministry

Help lead the assembly in song, as a cantor, choir member or instrumentalist during Mass.

David DiFiore (Sat 5pm & 8:30am Masses) music@stjohnsea.org

Toni Fortunato (10:30am Mass) tonifortunato@msn.com

Sacristans

Prepare the Church for Mass and other liturgies, to provide a welcoming environment, and assist the presider as needed.

Contact: Marilyn Wittenmyer -525-3718 or Jan Volk 783-5298

Ushers

Assist with seating individuals before and during Mass, take up the collections and provide other assistance as needed.

Bennett Jones (206) 784-6938

Liturgical Ministries (cont'd)

Liturgical Environment

Volunteers follow a plan to decorate the church for the major seasons of Easter and Christmas.

Parish office 206-782-2810 or parishoffice@stjohnsea.org

Children's Liturgy of the Word (CLOW)

Adult leaders gather children grades 1-5 before the Sunday 10:30am Mass to celebrate the Liturgy of the Word through prayer, scripture and reflection in language that is age appropriate.

Anne Merklin: 206-782-2810 ext 305 amerklin@stjohnsea.org

Pastoral Care

Sunday Hospitality (Coffee & Donuts)

Provide hospitality and refreshments after the 8:30 am and 10:30 am Masses.

Shane Pierard –206-229-6303 or smcprocessing@yahoo.com

CYO Athletics

Organize, coach and support sports programs for our parish youth.

Pat Daly—tpatrickdaly@hotmail.com

Funeral Receptions

Help with preparation or serving of receptions for funerals.

Parish office 206-782-2810 or parishoffice@stjohnsea.org

Mom's Group

Mothers with young children meet weekly for fellowship.

Parish office 206-782-2810 or parishoffice@stjohnsea.org

New Parishioner Welcoming Committee

Welcome newly registered parishioners and provide information through a phone call or visit.

Parish office 206-782-2810 or parishoffice@stjohnsea.org

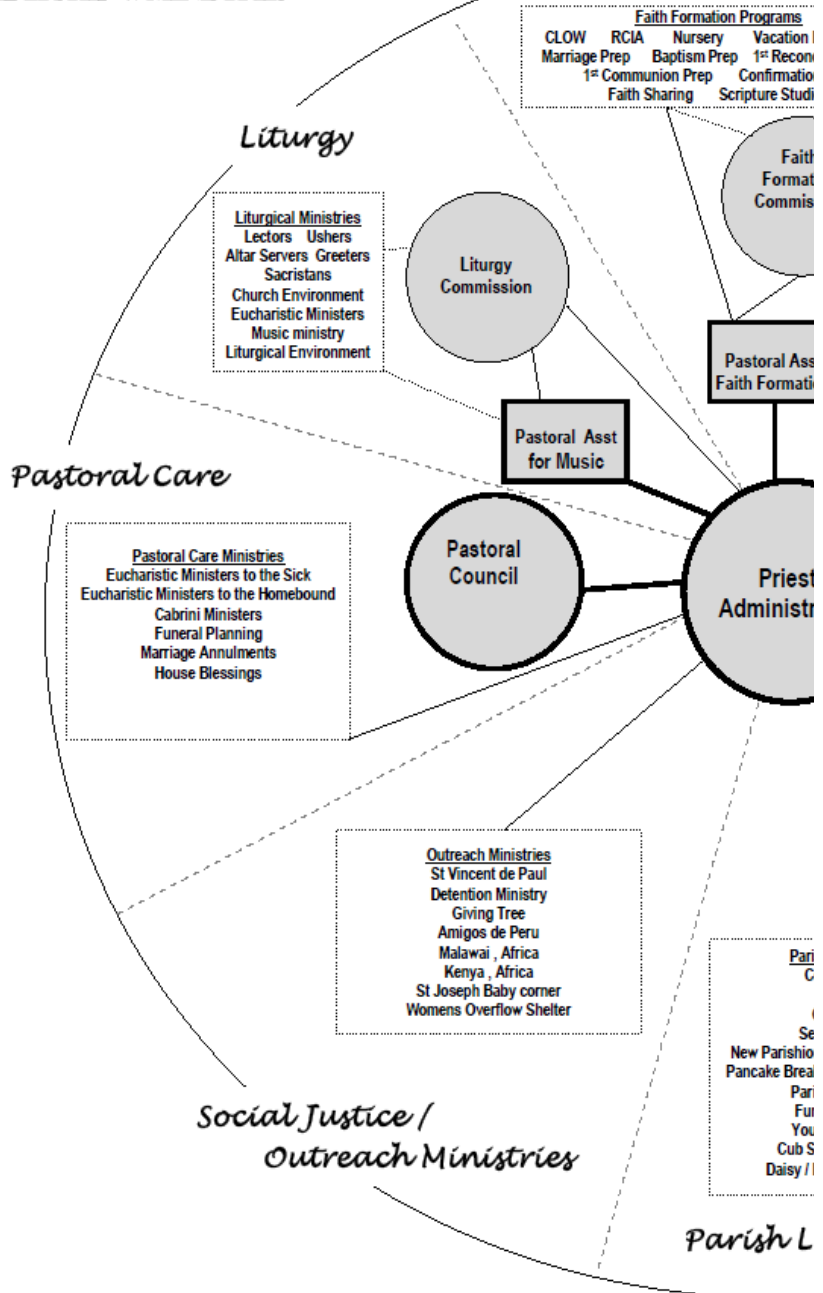
Parish Events

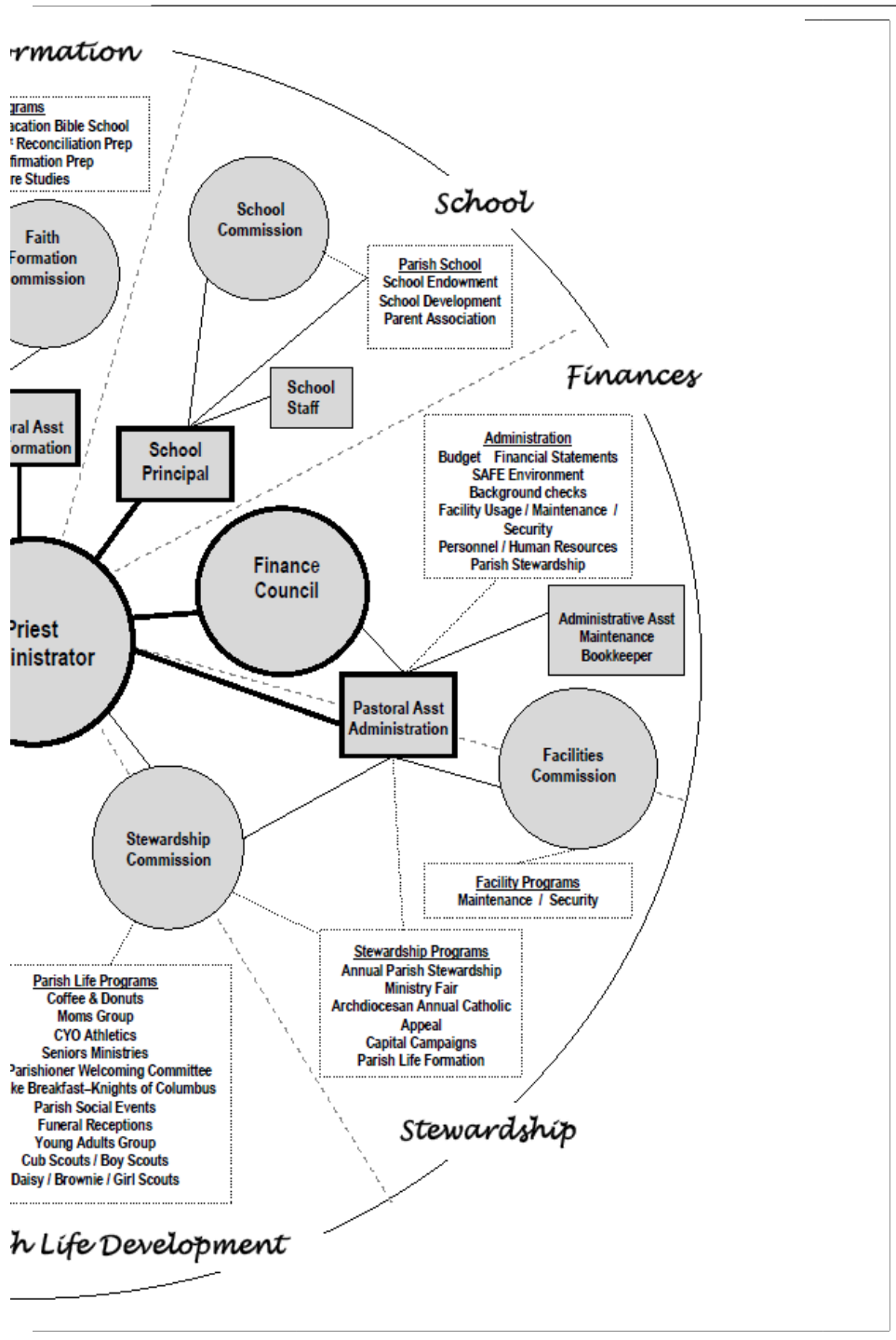
Help with planning , preparation and serving at parish's social events - Feast of St John, Parish Picnic, etc.

Parish office 206-782-2810 or parishoffice@stjohnsea.org

**ST JOHN THE EVANGELIST PARISH
LEADERSHIP & MINISTRIES**

Faith Form





Pastoral Care cont'd

Young Adult Group

Parishioners age 18 – 35 come together for social activities and volunteer service projects.

Parish office 206-782-2810 or parishoffice@stjohnsea.org

Ministry to Ballard Care—Weekly-Friday mornings @ 10:15am

Set up services, trains new ministers, schedules ministers. Deliver Communion to residents who are unable to attend Mass.

Contact Maria Dammer 782-9439

Outreach

Baby Corner-Baby Corner assists families in the greater Seattle area with baby items such as clothes, diapers, and formula. Items are donated, collected in the back of the church, and delivered to St. Joseph twice a month. Contact Adrey Ocampo

Boy Scouts/Girl Scouts (Cubs & Brownies)

Parish office 206-782-2810 or parishoffice@stjohnsea.org

Communion for the Homebound ~ Deliver Eucharist to homebound-

Contact : Anita Souza alnanita@netzero.net (or call parish office)

Culture of Life Ministry We are a group of individuals interested in promoting Catholic teaching about the sanctity of human life from conception to natural death. Contact: Anita Souza alnanita@netzero.net or parish office.

Jail Ministry— four members of St. Johns Parish visit the prisoners at King County Jail at 5th & James downtown. We are part of a team of Catholics organized by the Archdiocese. We do two basic ministries- Conduct religious services and visit prisoners one-on-one. Contact: Patricia King 206-789-5721

Knights of Columbus - Fundraising for parish/school needs, pancake breakfasts, Christmas tree sales, brotherhood, fellowship, and Church support on a local and national level.
Contact: Daniel Pelfrey - 206-992-7706

Outreach cont'd

St Vincent de Paul Society

Serve people in need within the local community through assistance with food, clothing, shelter and utilities.

Contact: Al Souza alnanita@netzero.net

Women's Overflow Shelter

Provide overnight housing for 12 women from the overflow from the Noel House in Seattle. Women's Overflow ministry also provides lunches for the ladies and pick up and delivery to and from St John's, so sandwich preparation and bus drivers are also needed.

Contact: Mary Kearney 297-7072 marytkearney@comcast.net

Faith Formation

Nursery Childcare

During 10:30 am Mass, nursery helpers provide a safe and enjoyable experience for children ages 6 months to 3 years.

Susan Pope sjpoppe99@aim.com

Sunday School 10:30 Mass 4year olds are welcome

Anne Merklin: 206-782-2810 ext 305 amerklin@stjohnsea.org

Children's Liturgy of the Word

Adult leaders gather children grades 1-5 before the Sunday 10:30 am Mass to celebrate the Liturgy of the Word through prayer, scripture and reflection in language that is age appropriate.

Anne Merklin: 206-782-2810 ext 305 amerklin@stjohnsea.org

Rite of Christian Initiation (RCIA) Team & Sponsors

Catechists journey with adult catechumens and candidates as they prepare for the sacraments of initiation.

Anne Merklin: 206-782-2810 ext 305 amerklin@stjohnsea.org

Youth Group

Youths grade 7th thru 12th, journey with youth into the adventure of discipleship.

Renee Marquez: 206-794-4973 rmarquez001@yahoo.com

Baptism

Catechists journey with parents and godparents as they prepare for the sacraments of baptism for their child.

Anne Merklin: 206-782-2810 ext 305 amerklin@stjohnsea.org

Confirmation

Youths, age 16 and older, six month journey leading to confirmation into the Catholic beliefs of service, justice and healing.

Anne Merklin: 206-782-2810 ext 305 amerklin@stjohnsea.org

Marriage

Catechists journey with couples as they prepare for the sacrament of marriage.

Anne Merklin: 206-782-2810 ext 305 amerklin@stjohnsea.org

Administration

Church Cleaning*

Volunteers straighten pews, dust, polish and spot clean regularly and do a deep cleaning of the church once or twice a year.

Building Maintenance

Assist in the maintenance and repair of the parish facilities. Skills in plumbing, electrical, HVAC, boiler maintenance and repair.

Steve Berlage 206-276-4041 or parishoffice@stjohnsea.org

Grounds and gardening

Assists in the upkeep of our parish grounds.

Steve Berlage 206-276-4041 or parishoffice@stjohnsea.org

Parish Office Receptionist*

Assists in answering phones, taking messages, greeting visitors, and other miscellaneous tasks.

Bulletin Stuffers*

Prepare bulletins by placing inserts into the cover page, Friday mornings

Bulk Mailings*

Preparation of bulk mailing involves stuffing, sealing and adding postage.

Parish Website*

Help keep our website current by gathering information, and posting onto the website.

*Parish office 206-782-2810 parishoffice@stjohnsea.org

Notes

Notes



"Life itself, every bit of health that we enjoy,
every hour of liberty and free enjoyment,
the ability to see, to hear, to speak, to think,
and to imagine - all this comes from
the hand of God.

We show our gratitude by giving back
to him a part of that which
He has given to us."

~Billy Graham